

Secure Remote Access for Staff and Customers

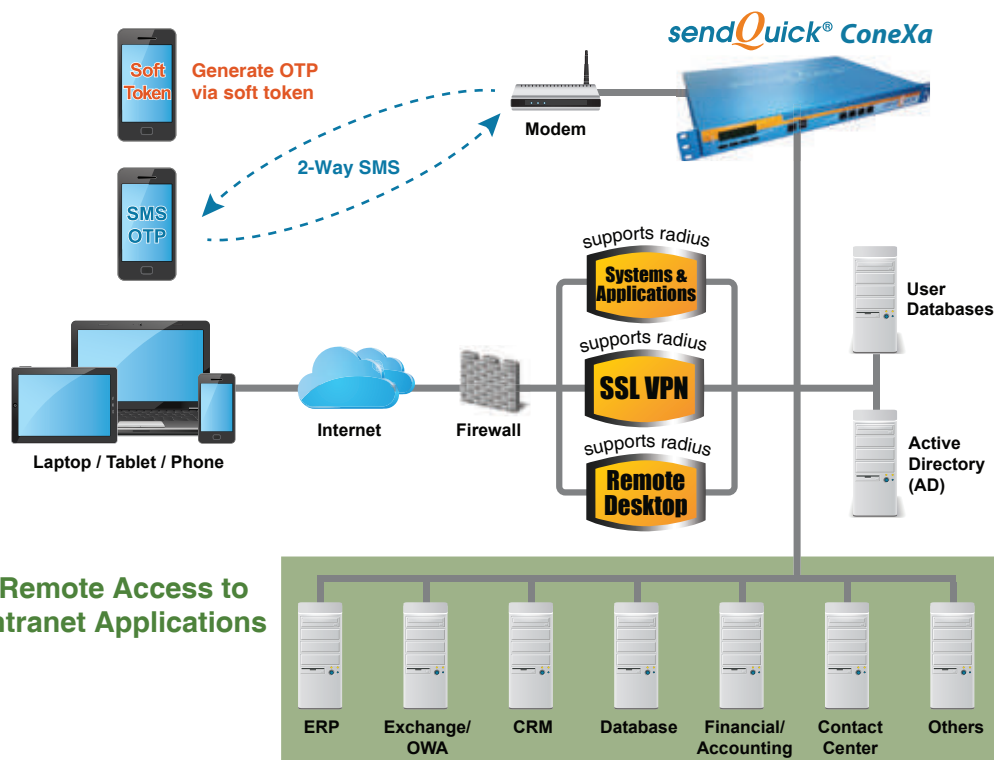
- Easy deployment with SMS OTP, Mobile Soft Token, and Email OTP
- Flexible 2-factor authentication for all usage scenarios
- Integrates to local/external databases or Microsoft Active Directory
- Supports all Radius based SSL VPN



With the advent of mobile technology and greater connectivity, it is very commonplace to see a large percentage of the workforce in any industry to be mobile. This mobility enables employees to work remotely away from the physical office for greater efficiency.

However, with greater mobility, comes an even bigger issue – Security. The increase in cyberattacks on the organisation's IT network has highlighted the need for companies to secure the remote access for their staff and customers. Today, most companies use either SSL VPN or IPSec to secure the remote access. However, this does not address the authenticity of the remote users and 2-factor authentication (2FA) is an industry accepted solution for remote user authentication.

There are various types of 2FA solutions in the marketplace. Today, mobile phones are ubiquitous and provide an easy and low-cost method to implement 2FA. The widely popular SMS OTP, as well as, OTP generated through soft token (smartphones) can be easily delivered on all mobile phones, making 2FA implementation effortless for companies. sendQuick ConeXa is the ideal solution for all companies seeking low cost and seamless way to implement 2FA. It has a built-in SMS OTP, Soft Token and Email OTP with Authentication and Authorisation (AA) capability, Radius server and an SMS transmission engine, all built in a single appliance. sendQuick ConeXa fulfills all the 2FA requirements of organisations and easily integrates with the existing enterprise network management system.



KEY FEATURES

- All-in-one appliance for 2-factor authentication using SMS OTP, Email OTP & Soft Token
- Easy to implement system (plug & play)
- Supports multiple SSL VPN's for multiple remote access authentication
- Multiple SSL VPN login scenario and work flow* for user familiarity (Challenge/Response, Single Sign-On, Single Page Token)
- Supports SMS OTP & Soft Token
- Able to work with most* SSL VPN servers
- OTP Characteristics:
 - 6-10 characters
 - Customizable User Message
 - Configurable OTP expiry time (minutes)
- Supports Soft Token on iOS & Android
- Low (almost zero) maintenance server
- Scalable to support up to 32 GSM modems
- Secure and does not depend on external or 3rd party networks
- Able to work with most** mobile networks (GSM, CDMA, 3G)
- Option for RAID and High Availability (HA) for zero down-time implementation

*server dependent

**network dependent



sendQuick ConeXa 25

For 25 SMS OTP and 25 Soft Token users
(supports single AD for authentication)



sendQuick ConeXa 100

Unlimited SMS OTP, up to 100 Soft Token users
(supports single AD for authentication)



sendQuick ConeXa 300

Unlimited Soft Token & SMS OTP
(supports multiple AD for authentication)

BENEFITS OF SMS & SOFT TOKEN

- Works on all mobile phones
- Clientless approach for SMS (No software to install or maintain on the mobile phone)
- Low deployment cost to end user
- No maintenance and replacement cost for hardware (Mobile phones are owned by end users)
- Convenient, easy to use and affordable 2FA
- Lower maintenance and support cost for company
- User convenience (No additional hardware to carry)

REMOTE ACCESS APPLICATIONS SUPPORTED

- RADIUS-based applications
- Checkpoint SSL VPN
- Cisco SSL VPN
- Juniper SSL VPN
- F5 SSL VPN
- SonicWall VPN / Avantail SSL VPN
- Citrix Netscaler
- VMWare View
- Windows Login

DATABASE SUPPORTED

- MySQL
- SQL Server
- PostgreSQL
- Oracle
- RADIUS
- Microsoft Active Directory (AD)
- LDAP

SOFT TOKEN SUPPORTED

- iOS - Google Authenticator
 - Free OTP
- Android - Free OTP

2-Factor Authentication Using SMS One Time Password & Soft Token

HARDWARE SPECIFICATIONS

sendQuick ConeXa 25 & sendQuick ConeXa 100

- Intel® CPU
- Hardened Linux OS
- 4GB RAM
- 500GB HDD
- 1U rack mountable [432(W) x 275(D) x 43(H) mm]
- 4 x 10/100/1000BT NIC card
- 2G/3G modem with WCDMA 850/1900/2100 Mhz
- Estimated weight: 4.3kg
- 4 x USB, 1 x RS232, 1 x VGA
- Certification: CE, FCC, UL RoHS

sendQuick ConeXa 300

- Intel® CPU
- 4GB RAM
- 500GB HDD
- 1U rack mountable [432(W) x 305(D) x 43(H) mm]
- 4 x 10/100/1000BT NIC card
- 2G/3G modem with WCDMA 850/1900/2100 Mhz
- Estimated weight: 5.5kg
- 6 x USB, 1 x RS232, 1 x VGA
- Certification: CE, FCC, UL RoHS

SOFTWARE SPECIFICATIONS

- All software (Linux, PostgreSQL, Apache, Email, FreeRadius) pre-installed

VM

- 2 Core CPU
- 4GB RAM
- 250GB HDD



+65 6280 2881

info@talariax.com

www.talariax.com

www.facebook.com/sendQuick

www.linkedin.com/talariax-pte-ltd

76 Playfair Road #08-01 Singapore 367996

Copyright © 2002-2017 TalariaX Pte Ltd. All Rights Reserved. sendQuick product name is a registered trademark of TalariaX Pte Ltd, a company incorporated in the Republic of Singapore. Pentium and Celeron are service names, trademarks or registered trademarks owned by their respective owners. Microsoft, Microsoft Exchange Microsoft Outlook, Outlook, Outlook 2007 are registered tradenames and trademarks of Microsoft Corporation. IBM, Lotus, Lotus Notes, Domino are registered tradenames and trademarks of IBM Corporation. All other trademarks mentioned in this document are the property of their respective owners.

Authorised Distributor/Reseller